

VEHICLE IDENTIFICATION

N00AC00AB

VEHICLE IDENTIFICATION NUMBER LOCATION

The vehicle identification number (V.I.N) is located on a plate attached to the left top side of the instrument panel.

VEHICLE IDENTIFICATION CODE CHART PLATE

N00AC01AB

All vehicle identification numbers contain 17 digits. The vehicle number is a code which tells country, make, vehicle type, etc.



1st Digit	2nd Digit	3rd Digit	4th Digit	5th Digit	6th Digit	7th Digit	8th Digit	9th Digit	10th Digit	11th Digit	12th to 17th Digits
Country	Make	Vehicle type	Others	Line	Price class	Body	Engine	*Check digits	Model year	Plant	Serial number
USA	A- Mitsubishi	3- Passenger car	A- Driver and Passenger Air Bags	K- ECLIPSE FWD L- ECLIPSE AWD	3- Medium 4- High 5- Premium	4- 3-door Hatch-back	Y- 2.0 dm ³ (122.0 cu.in.) [DOHC-MFI] F- 2.0 dm ³ (122.0 cu.in.) [DOHC-MFI-Turbo]	1 2 3 9 X	S- 1995 Year	E- DSM Plant	000001 to 999999

NOTE

* "Check digit" means a single number or letter X used to verify the accuracy of transcription of vehicle identification number.

VEHICLE IDENTIFICATION NUMBER LIST 4995 MODEL>

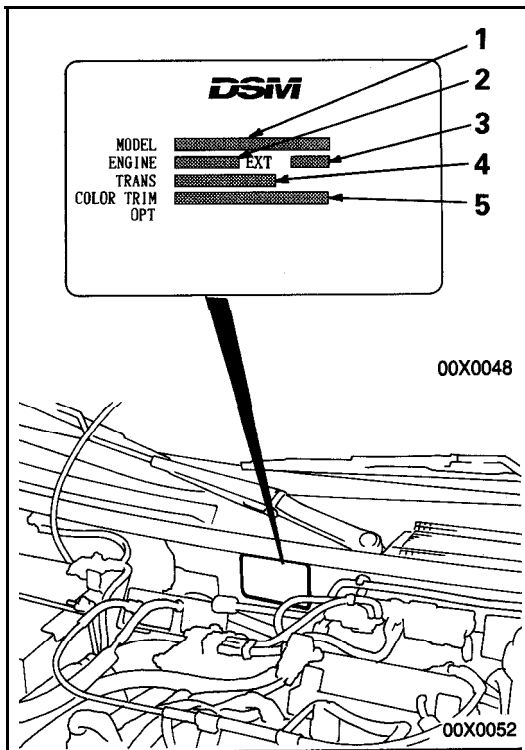
N00AC02AI

VEHICLES FOR FEDERAL

V.I.N. (except sequence number)	Brand	Engine Displacement	Model Code
4A3AK34Y□SE	Mitsubishi Eclipse <FWD>	2.0 dm ³ (122.0 cu.in.) [DOHC-MFI (420A)]	D31AMNJML4M D31AMRJML4M
4A3AK44Y□SE			D31AMNHML4M D31AMRHML4M
4A3AK54S□SE	Mitsubishi Eclipse <FWD>	2.0 dm ³ (122.0 cu.in.) [DOHC-MFI-Turbo (4G63)]	D32AMNGFL4M D32AMRGFL4M
4A3AL54S□SE	Mitsubishi Eclipse <AWD>		D33AMNGFL4M D33AMRGFL4M

VEHICLES FOR CALIFORNIA

V.I.N. (except sequence number)	Brand	Engine Displacement	Model Code
4A3AK34Y□SE	Mitsubishi Eclipse <FWD>	2.0 dm ³ (122.0 cu.in.) [DOHC-MFI (420A)]	D31AMNJML9M D31AMRJML9M
4A3KF44Y□SE			D31AMNHML9M D31AMRHML9M
4A3AK54S□SE	Mitsubishi Eclipse <FWD>	2.0 dm ³ (122.0 cu.in.) [DOHC-MFI-Turbo (4G63)]	D32AMNGFL9M D32AMRGFL9M
4A3AL54S□SE	Mitsubishi Eclipse <AWD>		D33AMNGFL9M D33AMRGFL9M

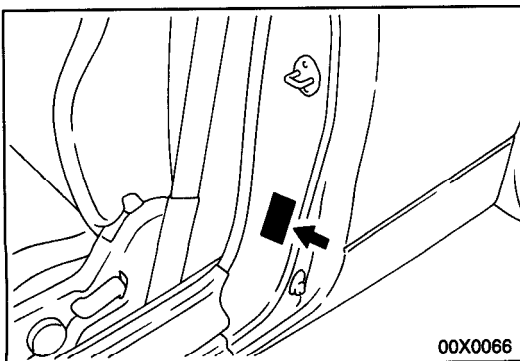


VEHICLE INFORMATION CODE PLATE

N00AC03AB

Vehicle information code plate is riveted onto the bulkhead in the engine compartment. The plate shows model code, engine model, transaxle model, and body color code.

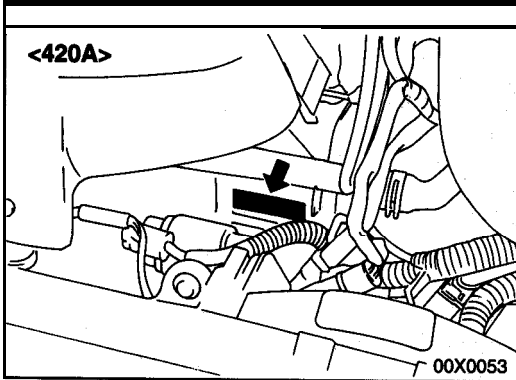
- 1. MODEL D32AM RGFL4M
 - Model series
 - Vehicle model
- 2. ENGINE 4G63
 - Engine model
- 3. EXT CA6A
 - Exterior code
- 4. TRANS F4A33
 - Transaxle model
- 5. COLOR TRIM OPT R25 67V 03V
 - Equipment code
 - Interior code
 - Body color code



VEHICLE SAFETY CERTIFICATION LABEL

N00AC0SAB

- 1. The vehicle safety certification label is attached to face of left door pillar.
- 2. This label indicates Gross Vehicle Weight Rating (G.V.W.R.), Gross Axle Weight Rating (G.A.W.R.) front, rear and Vehicle Identification Number (V.I.N.).

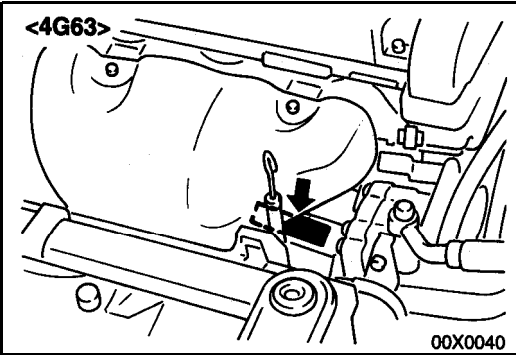


ENGINE MODEL STAMPING

N00AC06AB

1. The engine model number is stamped at the front side on the top edge of the cylinder block as shown in the following.

Engine model	Engine displacement
420A	2.0 dm ³ (122.0 cu.in.)
4G63	2.0 dm ³ (122.0 cu.in.)



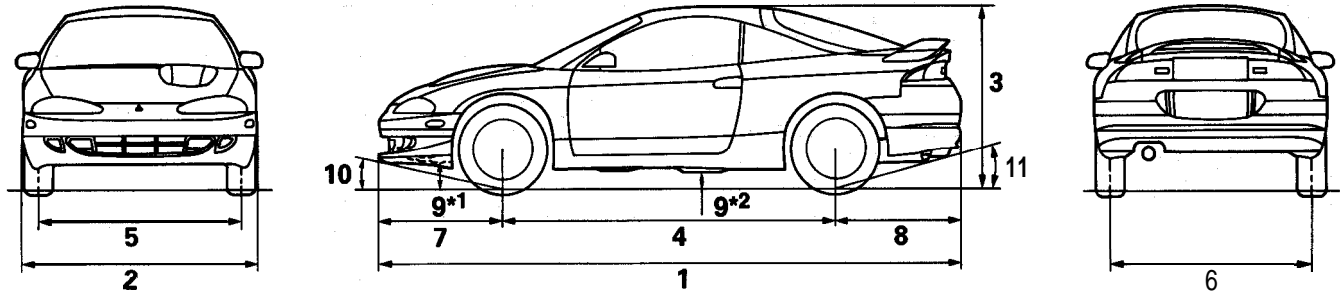
2. The 4G63 engine serial number is stamped near the engine model number, and the serial number cycles, as shown below.

Engine serial number	Number cycling
AA0201 to YY9999	— AA0201 - - -> AA9999 [AB0001 - - -> AY9999] [BA0001 - - -> YY9999]

3. The 420A engine serial number and identification number are stamped near the engine model number.

GENERAL DATA AND SPECIFICATIONS

N00AH00AB



*1: FWD
*2: AWD 00X0073

GENERAL SPECIFICATIONS

<FWD>

Model code		D31A				D32A	
		MNJML4M MNJML9M	MRJML4M MRJML9M	MNHML4M MNHML9M	MRHML4M MRHML9M	MNGFL4M MNGFL9M	MNGFL4M MNGFL9M
Vehicle dimensions mm (in.)							
Overall length	1	4,375 (172.2)					
Overall width	2	1,735 (68.3), 1,745 (68.7)*3				1,745 (68.7)	
Overall height (Unladen)	3	1,295 (51 .0)					
Wheel base	4	2,510 (98.8)					
Tread	Front	1,515 (59.6)					
	Rear	1,510 (59.4)					
Overhang	Front	930 (36.6)					
	Rear	935 (36.8)					
Minimum running ground clearance	9	145 (5.7)					
Angle of approach degrees	10	11.5					
Angle of departure degrees	11	15.8					
Vehicle weight	kg (lbs.)						
Curb weights		1,235 (2,722)	1,270 (2,800)	1,280 (2,822)	1,315 (2,899)	1,305 (2,877)	1,340 (2,954)
Gross vehicle weight rating		1,690 (3,726)		1,750 (3,858)			
Gross axle weight rating							
Front		1,010 (2,227)				1,025 (2,260)	
Rear		800 (1,764)				775 (1,709)	
Seating capacity		4					
Engine							
Model No.		420A (DOHC)				4G63 (DOHC)	
Piston displacement cm ³ (cu.in.)		1,996 (121.8)				1,997 (121.9)	
Transaxle							
Model No.		F5MC1	F4AC1	F5MC1	F4AC1	F5M33	F4A33
Type		5-speed manual	4-speed automatic	5-speed manual	4-speed automatic	5-speed manual	4-speed automatic
Fuel system							
Fuel supply system		Electronic control multiport fuel injection					

NOTE

● 3 denotes a vehicles with side air dam.

<AWD>

Items		Model code	D33A	
			MNGFL4M MNGFL9M	MRGFL4M MRGFL9M
Vehicle dimensions	mm (in.)			
Overall length		1	4,375 (172.2)	
Overall width		2	1,745 (68.7)	
Overall height (Unladen)		3	1,310 (51.6)	
Wheel base		4	2,510 (98.8)	
Tread	Front	5	1,515 (59.6)	
	Rear	6	1,510 (59.4)	
Overhang	Front	7	930 (36.6)	
	Rear	8	935 (36.8)	
Minimum running ground clearance		9	145 (5.7)	
Angle of approach	degrees	10	12.2	
Angle of departure	degrees	11	16.2	
Vehicle weight	kg (lbs.)			
Curb weights			1,415 (3,120)	1,450 (3,197)
Gross vehicle weight rating			1,850 (4,079)	
Gross axle weight rating	Front		1,050 (2,315)	
	Rear		850 (1,874)	
Seating capacity			4	
Engine				
Model No.			4G63 (DOHC)	
Piston displacement	cm ³ (cu.in.)		1,997 (121.9)	
Transaxle				
Model No.			W5M33	W4A33
Type			5-speed manual	4-speed automatic
Fuel system			Electronic control multiport fuel injection	
Fuel supply system				